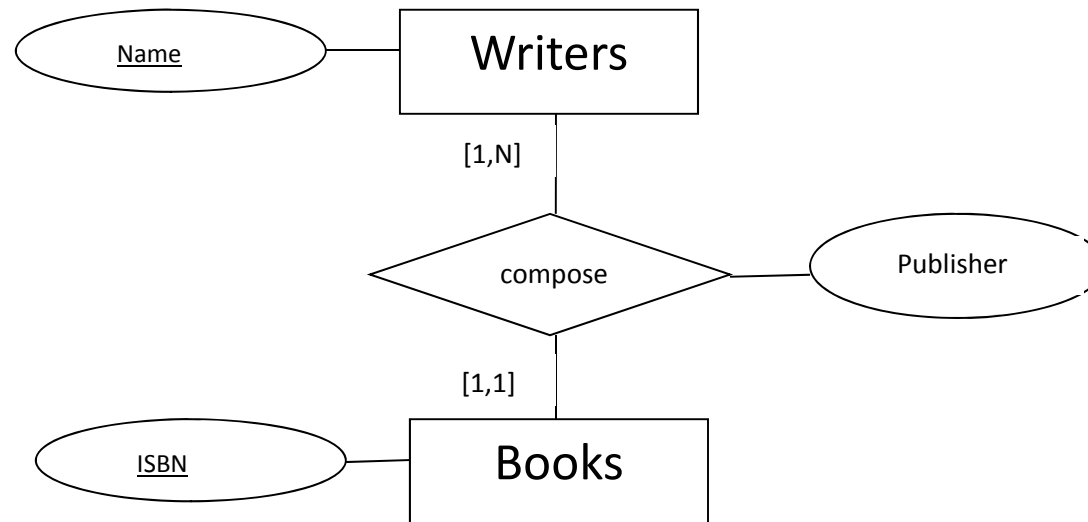


Sample assignment

Assignment 1 (E/R-Modelling) 7 Points

Given the following E/R-Model (in the notation of the lecture) with an excerpt of the world of literature.



Can a book be composed by several writers?

~~yes~~ no [1,1]

Can a writer compose several books?

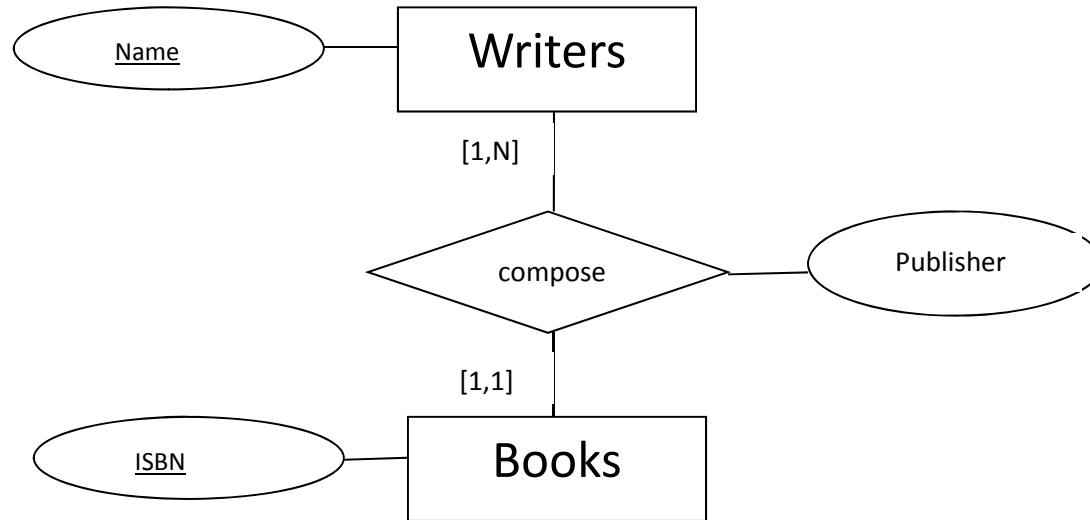
yes ~~no~~ [1,N]

Can a writer also compose no books?

~~yes~~ no [1,N]

Give a **short** explanation in each case.

Sample assignment (cont'd)



Describe the **two** tables which stem from the **refined** transformation of 1:N relationships to relational schemas for the above model.

Use the short notation $T(\underline{A}, B, ..)$ with T: Table name, A and B attributes, A primary key.

Writers (Name) Books (ISBN, Name, Publisher)