

Chapter 5: Relational Database Definition

Content:

- How to transform the relational model into a database schema
- DDL: create table students(studentNr int, name varchar);

Next:

- Query the database

How to define a relational schema for a database?

Professors			
PersNr	Name	Level	Room
2125	Sokrates	C4	226
2126	Russel	C4	232
2127	Kopernikus	C3	310
2133	Popper	C3	52
2134	Augustinus	C3	309
2136	Curie	C4	36
2137	Kant	C4	7

Students		
StudNr	Name	Semester
24002	Xenokrates	18
25403	Jonas	12
26120	Fichte	10
26830	Aristoxenos	8
27550	Schopenhauer	6
28106	Carnap	3
29120	Theophrastos	2
29555	Feuerbach	2

Lectures			
Lecture Nr	Title	Weekly Hours	Given_by
5001	Grundzüge	4	2137
5041	Ethik	4	2125
5043	Erkenntnistheorie	3	2126
5049	Mäeutik	2	2125
4052	Logik	4	2125
5052	Wissenschaftstheorie	3	2126
5216	Bioethik	2	2126
5259	Der Wiener Kreis	2	2133
5022	Glaube und Wissen	2	2134
4630	Die 3 Kritiken	4	2137

attend	
StudNr	LectureNr
26120	5001
27550	5001
27550	4052
28106	5041
28106	5052
28106	5216
28106	5259
29120	5001
29120	5041
29120	5049
25403	5022
29555	5022
29555	5001

require	
Predecessor	Successor
5001	5041
5001	5043
5001	5049
5041	5216
5043	5052
5041	5052
5052	5259

test			
StudNr	LectureNr	PersNr	Grade
28106	5001	2126	1
25403	5041	2125	2
27550	4630	2137	2

Assistants			
PersNr	Name	Area	Boss
3002	Platon	Ideenlehre	2125
3003	Aristoteles	Syllogistik	2125
3004	Wittgenstein	Sprachtheorie	2126
3005	Rhetikus	Planetenbewegung	2127
3006	Newton	Keplersche Gesetze	2127
3007	Spinoza	Gott und Natur	2126

SQL

SQL: Structured Query Language

Former name: SEQUEL

Standardized query language for relational DBMS:
SQL-89, **SQL-92**, SQL-99, SQL:2003 (XML-Extensions)

SQL is a **declarative query language**

Parts of SQL

Parts:

- DRL: Data Retrieval Language
- DML: Data Manipulation Language
- DDL: Data Definition Language
- DCL: Data Control Language
- TCL: Transaction Control Language

} Mostly only DML

DRL: Data Retrieval Language

DRL contains statements for queries

Simple query consists of the three

select, from and where

select *list of attributes*
from *list of relations*
where *predicate;*

DML: Data Manipulation Language

DML contains statements to

- Insert data
- Delete data
- Change data

insert, delete, update

DDL: Data Definition Language

- With the DDL the schema of a database can be defined
- Also contains statements to control the access path to the database

e.g. **create table, alter table, create view, create index**

- Correspondingly also delete statements **drop ..**

DCL: Data Control Language

- Contains statements mostly concerned with rights, permissions and other controls of the database system (authorization)

e.g. **grant** , **revoke**

TCL: Transaction Control Language

- Contains statements to control transactions
- A transaction is a set of interactions between application / user and the database
- Will be dealt with later in the section transaction management

e.g. **commit, rollback**

Variants of SQL

- Database cannot only be used interactively
- SQL can be embedded in other programming languages
- Problem: SQL is set oriented, most programming languages aren't

Dynamic SQL

- Is used when queries are not yet known when the program is compiled
- Standardized Interfaces
 - ODBC (Open Database Connectivity)
 - JDBC (for Java)
- More flexible, but usually a bit slower than embedded SQL

Dynamic SQL: Example

```
String db_url = "jdbc:postgresql://localhost:5432/uni";
Connection connection = DriverManager.getConnection(db_url, "alex", "123456");
Statement statement = connection.createStatement();
ResultSet result = statement.executeQuery("select name from students");
while (result.next()) {
    System.out.println(result.getString("name"), result.getInt("semester"));
}
```

Embedded SQL

- SQL statements are directly embedded in the corresponding host language (e.g. C, C++, Java, etc.)
- SQL statements are marked with a preceding **EXEC SQL**
- SQL statements are then replaced by a pre-processor by constructs of the corresponding language

DDL: Create Table Statement

Syntax diagram encompasses many pages!!

Simple form:

```
create table TableName (  
    Attribute1 DataType1 [NOT NULL],  
    ...  
    Attributen DataTypeN [NOT NULL]);
```

DDL: Example Create Table Statement

```
CREATE TABLE Professors  
  (PersNr INTEGER NOT NULL,  
   Name VARCHAR(30) NOT NULL,  
   Level CHAR(2),  
   Room INTEGER);
```

```
CREATE TABLE Lectures  
  (LectureNr INTEGER NOT NULL,  
   Title VARCHAR(30),  
   WeeklyHours INTEGER,  
   Given_by INTEGER);
```


DDL: Data types in SQL

strings and numbers

- **VARCHAR** (n) variable length string, length maximal n Byte
- **CHAR[ACTER]** (n) fixed length string of n Byte
- **NUMERIC** [(p[, s])] signed number with p digits in total, s of them after the decimal place
also **DEC[IMAL]** [(p,s)] (allows storing bigger values)
- **INT[EGER]** signed integer
- **SMALLINT** like INTEGER, smaller value range
- **FLOAT** [(p)] (rounded) floating point number (at least p Bits precision)
REAL, DOUBLE PRECISION **short cuts** for **FLOAT(p)**,
values for p dependent on implementation

DDL: Data types in SQL

date and time

- **DATE** valid Date
- **TIME** time (from 00:00:00 bis 23:59:59)
- **TIMESTAMP** timestamp (combination of date and time)

(ORACLE only has DATE and uses this as timestamp)

DDL: Data types in SQL

strings, binary data

- **LONG** variable string with up to 2 GB (**TEXT** SQL Server)
- **CLOB** string with up to 4 GB

- **RAW** (n) binary data of length n, n between 1 and 2000 Bytes
- **LONG RAW** binary data with up to 2 GB
- **BLOB** binary data with up to 4 GB

- **CFILE**, **BFILE** pointer to file (text, binary) (Oracle)
- **DATALINK** pointer to file (DB2)
- **MONEY / SMALLMONEY** (SQL Server)
- ...

restricted operations on it!

DDL: Integrity constraints

- One of the tasks of a DBMS:
guarantee the consistency of the data
- Semantical integrity constraints describe the properties of the mini world modelled
- DBMS can automatically check these constraints – once formulated

Primary Key Constraint

Value of an attribute or a combination of attributes does not occur twice in any instance of the data base

DDL: Primary key constraint

Value of an attribute or a combination of attributes does not occur twice in any instance of the data base

```
CREATE TABLE Table_Name (  
    Attribute_1 Data_Type_1 [NOT NULL],  
    ...  
    Attribute_n Data_Type_n [NOT NULL],  
    [CONSTRAINT constraint_name_pk] PRIMARY KEY  
        (Attribute_i, ...,Attribute_p));
```

DDL: Example primary key

```
CREATE TABLE Professors
(PersNr INTEGER NOT NULL,
Name VARCHAR(30) NOT NULL,
Level CHAR(2),
Room INTEGER,
PRIMARY KEY (PersNr) );
```

```
CREATE TABLE Lectures
(LectureNr INTEGER NOT NULL,
Title VARCHAR(30),
WeeklyHours INTEGER,
Given_by INTEGER,
PRIMARY KEY (LectureNr));
```

DDL: Primary Key Constraints (short form)

```
CREATE TABLE Professors  
  (PersNr INTEGER NOT NULL PRIMARY KEY,  
   Name VARCHAR(30) NOT NULL,  
   Level CHAR(2),  
   Room INTEGER);
```

```
CREATE TABLE Lectures  
  (LectureNr INTEGER NOT NULL PRIMARY KEY,  
   Title VARCHAR(30),  
   WeeklyHours INTEGER);
```


DDL: Further integrity constraints

Besides primary keys there are some other integrity constraints, such as:

- NOT NULL
- Unique
- Check clauses

DDL: NOT NULL

- Enforces defined attribute values when inserting tuples
- Mandatory for primary keys
- Possible to give default value

```
CREATE TABLE defaults (  
  Id INTEGER NOT NULL PRIMARY KEY,  
  Location VARCHAR(80) DEFAULT „GARCHING“,  
  VAT SMALLINT DEFAULT 19,  
  Age SMALLINT DEFAULT 20,  
  Height SMALLINT NOT NULL);
```

DDL: UNIQUE

Enforces key property (for candidate key)

```
CREATE TABLE Professors  
(PersNr INTEGER PRIMARY KEY,  
Name VARCHAR(30) NOT NULL,  
Level CHAR(2) CHECK (Rang IN ('C2', 'C3', 'C4')),  
Room INTEGER NOT NULL UNIQUE);
```

DDL: Check clauses

With check clauses the range of values for an attribute can be restricted

Example:

```
CREATE TABLE Professors (  
  PersNr INTEGER NOT NULL PRIMARY KEY,  
  Name VARCHAR(80) NOT NULL,  
  Level CHAR(2) CHECK (Level IN ("C2", "C3", "C4", "W1",  
  "W2", "W3")),  
  Room INTEGER CHECK (Room > 0 AND Room < 9999));
```

Referential Integrity

- Let R and S be two relations with schema R resp. S
- k is primary key of R
- Then $f \in S$ is foreign key, if for all tuples $s \in S$ holds:
 - $s.f$ either only holds only null values or only values not null
 - If $s.f$ has no null values, then there exists a tuple $r \in R$ with $s.f = r.k$
- The fulfillment of these properties is called “*referential integrity*”

DDL: Referential integrity

```
CREATE TABLE Table_name (  
    Attribute_1 Data_type_1 [NOT NULL],  
    ...  
    Attribute_n Data_type_n [NOT NULL],  
    [CONSTRAINT constraint_name_pk] PRIMARY KEY  
        (Attribute_i, ..., Attribute_p),  
    CONSTRAINT constraint_name_fk FOREIGN KEY  
        (Attribute_j, ..., Attribute_l) REFERENCES  
        Parent_table_name (Attribute_t, ..., Attribute_v));
```

DDL: Example referential key

```
CREATE TABLE Professors
(PersNr INTEGER NOT NULL,
Name VARCHAR(30) NOT NULL,
Level CHAR(2),
Room INTEGER,
PRIMARY KEY (PersNr) );
```

```
CREATE TABLE Lectures
(LectureNr INTEGER NOT NULL,
Title VARCHAR(30),
WeeklyHours INTEGER,
Given_by INTEGER,
PRIMARY KEY (LectureNr),
CONSTRAINT givenby_fk FOREIGN KEY
(Given_by) REFERENCES Professors (PersNr) );
```

DDL: Example referential key (short form)

```
CREATE TABLE Professors  
  (PersNr INTEGER NOT NULL PRIMARY KEY,  
   Name VARCHAR(30) NOT NULL,  
   Level CHAR(2),  
   Room INTEGER);
```

```
CREATE TABLE Lectures  
  (LectureNr INTEGER NOT NULL PRIMARY KEY,  
   Title VARCHAR(30),  
   WeeklyHours INTEGER,  
   Given_by INTEGER REFERENCES Professors);
```


DDL: Foreign key variants

Changes to key attributes can automatically be propagated:

- set null: all foreign keys values which reference a key which was altered or deleted are set NULL
- cascade: all foreign keys values which reference a key which was altered or deleted are likewise altered (to the new value) resp. Deleted

DDL: Example foreign key variants

Lectures			
Lecture Nr	Title	Weekly Hours	Given_by
5001	Grundzüge	4	2137
5041	Ethik	4	2125
5043	Erkenntnistheorie	3	2126
5049	Mäeutik	2	2125
4052	Logik	4	2125
5052	Wissenschaftstheorie	3	2126
5216	Bioethik	2	2126
5259	Der Wiener Kreis	2	2133
5022	Glaube und Wissen	2	2134
4630	Die 3 Kritiken	4	2137

Professors			
PersNr	Name	Level	Room
2125	Sokrates	C4	226
2126	Russel	C4	232
2127	Kopernikus	C3	310
2133	Popper	C3	52
2134	Augustinus	C3	309
2136	Curie	C4	36
2137	Kant	C4	7

DDL: Example foreign key variants

```
CREATE TABLE Lectures
```

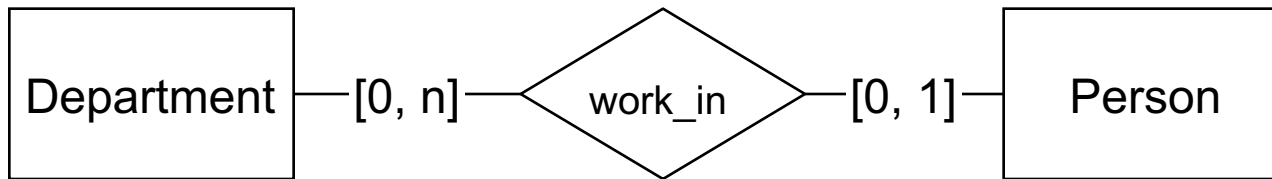
```
(LectureNr INTEGER NOT NULL PRIMARY KEY,  
Title VARCHAR(30),  
WeeklyHours INTEGER,  
Given_by INTEGER REFERENCES Professors  
ON DELETE SET NULL);
```

```
CREATE TABLE attend
```

```
(StudNr INTEGER REFERENCES Students  
ON DELETE CASCADE,  
LectureNr INTEGER REFERENCES Lectures  
ON DELETE CASCADE,  
PRIMARY KEY (StudNr, LectureNr));
```

Discussion: Personal (1)

ER-Diagram:



Realization in the relational model?

Discussion: Personal (2)

Additional rule:

In every department at least one person has to work in $([1, N])$

Realization in the relational model?

Additional rule :

Every person has to work in exactly one department $([1, 1])$

Realization in the relational model?

Homework until next lecture

Play the game SQL Island,
<http://www.sql-island.de/>

Try the W3Schools SQL Quiz,
<http://www.w3schools.com/quiztest/quiztest.asp?qtest=SQL>

Generated Values

Artificial values, surrogates, no semantic,
mostly as keys:

- Directly in the table definition:

```
create table dept (  
    deptno    serial primary key,  
    deptname  varchar(50) not null);
```

insert with:

```
insert into dept values(default, 'I3') or  
insert into dept values('I3');
```

Sequences to share

```
CREATE [ TEMPORARY | TEMP ] SEQUENCE name
      [ INCREMENT [ BY ] increment ]
      [ MINVALUE minvalue | NO MINVALUE ] [ MAXVALUE
      maxvalue | NO MAXVALUE ]
      [ START [ WITH ] start ] [ CACHE cache ]
      [ [ NO ] CYCLE ]
```

```
CREATE SEQUENCE artificial_key START 101;
```

```
CREATE TABLE Dept (deptno INT DEFAULT
nextval('artificial_key') NOT NULL,...)
```

```
INSERT INTO dept VALUES
(nextval('artificial_key'), 'I3');
```